



# RISEDALE

A family of learners

## Keep In Touch

KIT Newsletter

June 2026





## Dear parents/carers and pupils,

The summer term has already been packed full of amazing school events and achievements, as you will see from the pages that follow. The experiences our pupils have had, from Year 10 spending a week gaining valuable work experience, to educational visits and residentials, to five (yes, five!) Risedale pupils being selected to represent young people on the Richmond and Hambleton Shadow Board are supporting them to develop into resilient and well-rounded young people.



It has also been amazing to see the Month of the Military Child (April) marked so positively by many of our pupils alongside Dr Ellis, our Service Pupil Manager. The events we have participated in have fostered real belonging.

It has been wonderful to finally open our Year 11 common room, too. We wanted to create a space where our oldest pupils can relax, chat, play games and study, and, through the hard work of staff, this has become a reality and can be enjoyed by our current Year 10s when Year 11s finish their exams and leave us.

It may interest you to know that furniture and resources for the common room were purchased using funds raised by our recently established PTA. The PTA is holding a **Car Boot Sale on Saturday, 27th June** at Risedale (bottom playground/Youth Centre entrance) to raise funds to help us decorate and refurbish the maths and English departments, making them more vibrant and exciting learning environments. Please come along to browse or book a space to sell from (information including how to book a selling space can be found at the end of this newsletter).

Please enjoy reading our KIT Newsletter. As always, please let us know if there is anything we can do to support you and your family. I hope this term brings yet more opportunities for pupils to shine and be the **BEST** version of themselves.



Kindest regards,

**Mrs Lucy Greenwood - Headteacher**

#TeamRisedale  #BEST

**RESPONSIBILITY RESPECT RESILIENCE RELATIONSHIPS**



**RISEDALE**

A family of learners

# CAR BOOT SALE

**BARGAINS, COMMUNITY & FUN FOR ALL!**



**EVERYONE WELCOME!**  
♡

**GREAT FINDS  
GOOD TIMES  
SUPPORT OUR  
SCHOOL!**



**SATURDAY 27<sup>TH</sup> JUNE** (27/06/26)



**10AM-2PM**

**STALL HOLDERS CAN SET UP FROM 9AM**



**LOCATION:**

Risedale School bottom yard  
(entry through Youth Centre gates)



**PARKING FOR NON STALLHOLDERS:**

School car park



**COST: £10 per pitch**

Register via our online form  
Any remaining pitches on the day will be first-come, first-served — cash only.



**ENTRY: £1 per adult**

Children enter free with parent/carer.



**REFRESHMENTS WILL BE ON SALE THROUGHOUT THE DAY**

Hot dogs • Coffee/Tea • Cold drinks • Ice lollies  
Homemade baked treats



**THIS WILL BE A CASH ONLY EVENT  
OTHER THAN ONLINE BOOKING.**

**SCAN TO BOOK  
YOUR PITCH  
ONLINE! →**





The day was packed with activities, and while the visit from the ice cream van was a definite crowd favourite, the real highlight was watching our pupils in action. They stepped up to help run the event, demonstrating our **BEST** school values.



Their kindness didn't go unnoticed, with Angela Campbell, Service Children's Champion, sharing on Facebook:

*"What a wonderful group of young people! They were so kind to the younger children, helping to man some of the activity stations whilst also joining in the fun."*

Following the event, pupils were also presented with special certificates of participation to recognise their hard work and contribution to the festival's success. We are incredibly proud of how our pupils represented our community!

### **A Community of Resilience**

From the creative expressions of our younger pupils to the leadership shown at the festival, this period has been a fantastic showcase of the talent and **RESILIENCE** within our military community.

Reflecting on the month's celebrations, Service Pupil Manager Dr Ellis added:

*"April has been a truly heart-warming reminder of the incredible spirit our service pupils possess. Whether they were expressing themselves through poetry or supporting younger children at the festival, they have shown exactly what it means to be part of the Risedale Family. We are so proud of them all."*



The Month of the Military Child may be over, but our pride in our service pupils remains year-round. We look forward to building on these fantastic partnerships and continuing to support our military families throughout their Risedale journey.

**FIND OUT MORE:** To learn more about the support we provide for our service pupils and their families here at Risedale School, please visit our dedicated page: [www.risedale.org.uk/pupils/service-children](http://www.risedale.org.uk/pupils/service-children)

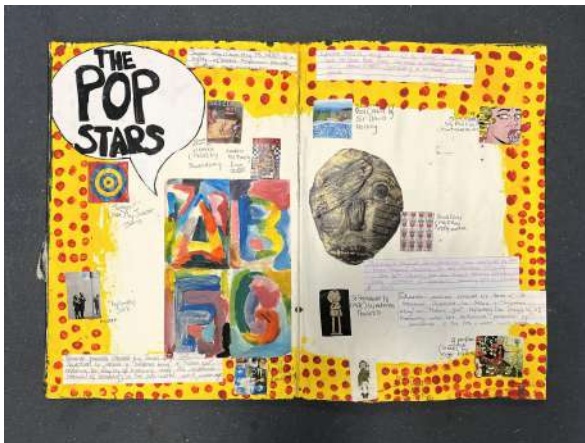
## 🎨 Sketchbook Spotlight: Year 9 Pop Art Perfection

As a follow-up to the fantastic clay 'Paolozzi' sculptures made in Art during the Spring Term, Year 9 have now completed their Pop Art projects, and aren't they brilliant!!

Across the year group, 30 pupils (almost 1/3 of the year group) achieved levels of excellence in one or more of the assessment criteria, which means they are already demonstrating skills at GCSE standards. Many other pupils demonstrated visible improvements in their sketchbook presentation methods and practical art skills.

It really is brilliant to see our Year 9 pupils making a last push for achievement at the end of their Key Stage 3 journey, regardless of their option choices. Well done, Year 9!

If you want to see the incredible sculptures that kicked off this creative journey, you can visit the gallery here: [Risedale Artists Bring Robots to Life! | 20/01/2026](#)



## Year 11 Geography Field Trip to Hornsea

On Friday, 17th April, 37 of our Year 11 GCSE Geography pupils visited Hornsea on the Holderness Coast to complete their essential fieldwork, splitting the day into two key investigations to gather the primary data required for their GCSE studies.

### Investigating Coastal Management

In the morning, the pupils focused on physical geography. They investigated the effectiveness of groynes in stopping longshore drift by measuring the exposed height of the groynes from the beach. This practical work allowed them to see how sediment is managed along this specific stretch of the coastline.

### Tourism and Local Impact

During the afternoon, the focus shifted to human geography. The group investigated whether tourism has a positive impact on the town of Hornsea. To do this, pupils spoke with members of the public to complete questionnaires about the local impact of visitors.

The group also found time to sample the "local delights" of the seaside, including fish and chips and ice cream!

### Praise from the Geography Department

The trip was a fantastic success, with the pupils conducting themselves excellently throughout the day.

***"The pupils were a credit to the school, and we had a great day,"*** said Mr Sherwood, Head of Humanities.



***"Their commitment to their data collection was excellent, and they represented the Risedale Family brilliantly. Thank you to the staff who accompanied the trip and made it all possible."***

Well done to all our Year 11 Geographers for their hard work and positive attitude!

## 🎉 NEW Year 11 Common Room is OPEN!

We are thrilled to announce that our brand-new Year 11 Common Room is officially open! This dedicated space is designed to give our pupils a place to recharge, study, and connect during their final year.

The feedback so far has been really heartwarming. Pupil Support Manager, Mrs Niblett, shared: *"All the Year 11 pupils have been so incredibly well behaved, respectful, and thankful to have this space."*

### A Huge Thank You

A massive shout-out goes to Mrs Vizer (BEST Positive Behaviour Lead KS4) and all the incredible staff who worked tirelessly behind the scenes to get this room ready. From moving furniture to adding those finishing touches, your hard work has created a fantastic environment for our pupils.

We would also like to extend a special thanks to all the staff who have volunteered and given up their own lunchtimes to supervise the room, ensuring our pupils have a safe and welcoming space to enjoy every day.



## Risedale Hosts Official Launch of RYCIC Shadow Board



On Tuesday, 21st April 2026, Risedale School was proud to host the official launch of the Richmond and Hambleton Shadow Board—a major milestone for youth leadership in our region.

The event brought together proactive pupils from across the local area to begin the vital work of drafting a strategic plan for our community's future. The launch proved that when young people are given a seat at the table, their vision is both ambitious and inspiring.

## Risedale Pupils Leading the Charge

We are especially proud to have five of our own Risedale pupils at the forefront of this mission. By taking on these roles, they are putting the Risedale Family values into practice on a regional stage:

- **RESPONSIBILITY:** Leading with purpose and taking ownership of local issues.
- **RESPECT:** Collaborating effectively with pupils from other local schools.
- **RELATIONSHIPS:** Strengthening the bonds between our school and the wider Richmond and Hambleton community.

## A Strategic Vision for the Future

The Shadow Board, supported by the [Richmond Yorkshire Community Interest Company](#) (RYCIC), is designed to ensure that the "voice of the future" is heard today. During the launch at Risedale, the new Directors began discussing real-world strategy, focusing on how our local area can better serve the next generation in terms of culture, environment, and opportunity.

This is just the beginning for our young leaders. As the Shadow Board continues its work throughout 2026, we look forward to seeing the pupils' ideas turn into tangible community projects.

## ☀️ Pupil Receptionist Shout-Out: Living our BEST Values! ☀️

A huge well done to our Pupil Receptionists, Grace Hind and Leah Kumzinda (9Dunphy)!

As part of our Careers, Education, Information, Advice and Guidance (CEIAG) programme, Year 9s are stepping up to show exactly what it means to be the **BEST** versions of themselves. By taking on this role, Grace and Leah have perfectly demonstrated our school values:

💙 **RESPONSIBILITY:** Taking ownership of the Pupil Reception desk, representing the school with pride, and wearing the uniform with excellence.

💜 **RESPECT:** Providing a polite and professional welcome to all visitors and staff.

🧡 **RESILIENCE:** Stepping out of the classroom to learn new workplace skills and maturely embracing the busy school environment.

❤️ **RELATIONSHIPS:** Building positive connections within our school family and supporting our community.



Our Year 9s are gaining invaluable "Cultural Capital" and social skills that will help them thrive in society, and we are so proud of how they are growing into responsible, respectful, and resilient citizens!

## Year 11 Smash their GCSE PE Moderation 🏸



On Thursday, 23rd April, our Year 11 GCSE PE pupils gathered for their practical moderation in Badminton. The morning was a busy one, with performances being recorded as part of the official GCSE course requirements.

The photo above captures the group getting prepped and ready to go just before the moderator arrived. We were incredibly proud of the teamwork, focus, and professionalism shown by everyone involved throughout the session.

Well done to all the pupils who took part—you truly smashed it!

## Risedale Music Department Secures New Funding! 🎸 🏆



We are beyond excited to announce that the Risedale School Music Department has officially secured funding from the Universal Music UK Sound Foundation! This incredible support is a game-changer for our pupils, providing us with the resources to upgrade our equipment and expand musical opportunities across the school.

On receiving the funding, Head of Expressive Arts, Mrs Lumsdon, said, *"At Risedale, we want every pupil to be the **BEST** version of themselves. This funding allows us to foster **RESILIENCE** as pupils tackle new musical challenges and build stronger **RELATIONSHIPS** through collaborative performance. By taking **RESPONSIBILITY** for these professional-grade instruments and showing **RESPECT** for the creative process, our pupils are not just learning music—they are developing the core values that define our school family."*

This partnership reinforces our commitment to a well-rounded education where the arts are celebrated and accessible to all. We look forward to hearing the results of this funding echoing throughout the school very soon!

A massive thank you to the foundation for believing in our talent!

## 🌸 Risedale in Bloom: Welcoming the Summer Term ☀️



As we begin the Summer Term, the Risedale grounds are truly coming to life. The vibrant pink blossoms and bright daffodils have provided a wonderful backdrop for our pupils during their breaks and outdoor activities, signalling the welcome arrival of warmer days and clearer skies.

A well-maintained environment plays such an important role in school life, and we are incredibly proud of how our site is looking. This is only possible thanks to the dedication of our fantastic Site Team. Their tireless work behind the scenes ensures that our grounds remain pristine and welcoming for the entire Risedale Family to enjoy throughout the spring and into the summer months.

A huge thank you to the team for their continued hard work in making Risedale such a beautiful place to learn and work.



## Year 7 Adventures at Bewerley Park

In April, 32 pupils and four staff headed to Bewerley Park Outdoor Centre for the annual Year 7 Residential. We set off on Monday morning, fueled by the promise of sunshine and the excitement of three days of adventure.



Upon arrival, we were greeted by a fantastic team of instructors and settled into a brand-new accommodation block. The first hurdle? Making the beds. I am delighted to report that every pupil was successful; furthermore, they maintained impeccably tidy dormitories throughout the stay. Parents, take note: they have officially lost their excuse for messy bedrooms at home!

Over three action-packed days, the pupils pushed their limits. Whether they were mountain biking, caving, or gorge walking, their efforts were nothing short of their **BEST**. We scrambled through the iconic formations at Brimham Rocks, battled high winds in canoes, and honed our navigation skills during orienteering.



We are incredibly proud of the way our pupils showed **RESILIENCE** in trying everything and not giving up, even when the activities were new and challenging. They showed kindness and **RESPECT** to others and took **RESPONSIBILITY** for their own safety and that of their peers. Most importantly, they developed positive **RELATIONSHIPS**, building new friendships and supporting one another through every challenge.

It was an absolute privilege to spend these three days with such a wonderful group of young people. While we were all sorry to see the trip end, we returned with memories to last a lifetime. My sincere thanks go to Mrs Price, Dr Shephard, and Mr Shergold for their dedication (and for sacrificing their sleep!) to make this trip possible.

**Mrs Hailwood (Trip Leader and Head of Science Faculty)**

## 🏃 Marathon Milestone For Mrs Whitfield! 🏆

A massive congratulations to our Examinations and Data Manager, Mrs Annelie Whitfield, who conquered the London Marathon this weekend in under 5 hours!

Mrs Whitfield is a dedicated member of the Swaledale Runners, and this was an incredible milestone in her running career. She has now completed a staggering 5 London Marathons, adding to an impressive global list that includes Brighton, Istanbul, New York, Budapest, and the Midsummer Marathon in Tromsø!

***"It was a fantastic day, and the atmosphere was incredible,"*** said Mrs Whitfield. ***"I want to say a huge thank you to all the staff at Risedale for all their support and lovely wishes!"***

With the finish line behind her, Mrs Whitfield is now focused on supporting our pupils as the exam season approaches. We know her "marathon" grit and determination will be a huge inspiration to them all over the coming weeks!



## Leeds Rhinos: A Night Under the Lights at Headingley! 🍌



On Friday, 24th April, some of our Year 10 pupils—the majority of whom are our KS4 PE pupils and members of the rugby team—headed to Headingley Stadium for an unforgettable evening. Accompanied by Mr Lawson and Miss Conway, the group watched the Leeds Rhinos deliver a masterclass against the Catalans Dragons.

The highlight of the night? Our pupils had the incredible opportunity to step onto the pitch in front of the home crowd as the players ran out!

***"I am so proud of every pupil who attended; they were an absolute credit to the school. We hope this experience inspires a lifelong love for the game and provides some brilliant real-world context for their Y11 exam content next year."*** Mr Lawson (Head of PE)



## Year 10 Work Experience: A Week of Professional Growth

From Monday, 27th April to Friday, 1st May, our Year 10 pupils traded their classrooms for the world of work. Whether they were out in the community at external placements or participating in our intensive on-site Alternative Work Experience programme, the week was a resounding success that showcased the incredible potential of our young people.

### Thriving in the Community

Many of our pupils spent the week at external placements, and the feedback has been nothing short of incredible. Staff members travelling across the region to visit pupils found them thriving in professional environments.

Year 10 Pupil Support Manager, Mrs Niblett, shared her pride after seeing their work ethic firsthand:

*"As their Head of Year, it has been one of the most rewarding elements of my role so far to visit our pupils on their placements. Seeing them apply themselves so professionally in a new environment and hearing such high praise from employers makes me beyond proud. I was truly beaming with pride seeing their work ethic in action."*



### Work Experience Placement Highlights:

#### Olivia Hodkinson at Mini Explorers Nursery:

Olivia was a natural, caring for pre-school children and supporting outdoor learning. On Facebook, Mini Explorers Nursery said:

*"It was a pleasure having Olivia complete her work experience with us, and we hope to welcome her back again in the future."*

#### Tyler Harker at Align:

Tyler hit the ground running, mastering architectural design systems to create high-quality work. His dedication has also opened the door for potential future apprenticeship opportunities with the company.



#### Harry O'Donoghue, Ollie Woodhouse, and Theo-Tyler Fort:

These pupils represented Risedale excellently during their placement with Amey, where they explored industry roles and visited active site projects like Bramble Woods.



## Alternative Provision - Building Skills for the Future:

For pupils remaining on-site, the school was a "hive of activity," hosting a structured programme designed to build essential professional attributes and provide a window into various industries.

**Monday (Travel & Tourism):** Pupils explored the aviation industry with Darlington College, mastering cabin crew safety drills alongside Mr Lawson and Mrs Niblett. Special mentions went to Branden Mallinson and Lily Crowcroft for their mastery of the drills.

**Tuesday (Transferable Skills):** Careers Advisor Mrs Harris led sessions on resilience and communication. Emily Furey, Ethan Tress, and Daisy Kelso were highlighted for their exceptional effort and determination.

**Wednesday (Mastering the Trades):** The school hall became a trade fair with Amey, Tivoli, and CLC. Teighan Saah-Kenne displayed impressive plastering skills. It was also wonderful to welcome back ex-pupils Dan and Tyler, who are currently thriving in their apprenticeships with CLC.

**Thursday (Inspiring Choices):** The team from York St John University helped pupils visualise their future educational paths and post-Risedale opportunities.

**Friday (Financial Literacy):** The week concluded with a practical workshop on workplace expectations and money management hosted by Newcastle Building Society.

### Celebrating Success

To close the week, Mrs Niblett named **Caelyn Robinson** and **Ethan Tress** as the "stars of the programme" for their 100% effort and positive engagement with every single provider.

Whether out in the community or working hard in school, our Year 10 pupils have shown exceptional character. You have done yourselves and Risedale proud!

### A Message from Mrs Porritt

I would like to extend a heartfelt thank you to all the employers who hosted our pupils on external placements. We also offer our sincere gratitude to the providers who made our on-site programme so impactful: Darlington College, Inspiring Choices (York St John), Mrs T Harris, Amey Defence Services, Tivoli Group, CLC Group, and Newcastle Building Society.

Reflecting on the week, Mrs Porritt said: *"At this time of year, I really look forward to engaging with Year 10 on their careers journey. It is lovely to see the pupils out on work placement blossoming into young adults by being their BEST."*

**Well done, Year 10 !!!**

**You have shown great character, given your BEST, and truly done Risedale proud!**



## Please Support Olivia & Rosie's Macmillan Fundraiser! ☕🍰

At Risedale School, we are incredibly proud of the initiative and heart shown by our pupils. Two of our Year 9 pupils, Olivia Bamber and Rosie Dobson, are currently going above and beyond to give back to the community, and we are delighted to support them in their latest venture.

The girls are hosting a special Afternoon Tea to raise vital funds for Macmillan Cancer Support, and we would love to see the Risedale Family come out in full force to support them!

Olivia and Rosie have been working hard behind the scenes to make this event a success.

The girls told us, *"We are so excited to host this event! We've been planning everything ourselves and really hope lots of people buy tickets and come along to support such an amazing charity."*



*"We are so excited to host this event! We've been planning everything ourselves and really hope lots of people buy tickets and come along to support such an amazing charity."*



### How You Can Join In

It's going to be a wonderful afternoon filled with sandwiches, scones, and community spirit. There will also be a raffle and a tombola with some fantastic prizes up for grabs.

- **When:** Sunday, 28th June 2026 | 2pm – 4pm
- **Where:** Colburn Village Hall
- **Tickets:** £5 (Available from the girls or the Colburn Village Hall Cafe)
- **Event Details:** [Facebook Event Page](#)

## Designers of the Future: KS4 Textiles Trip to the Bowes Museum

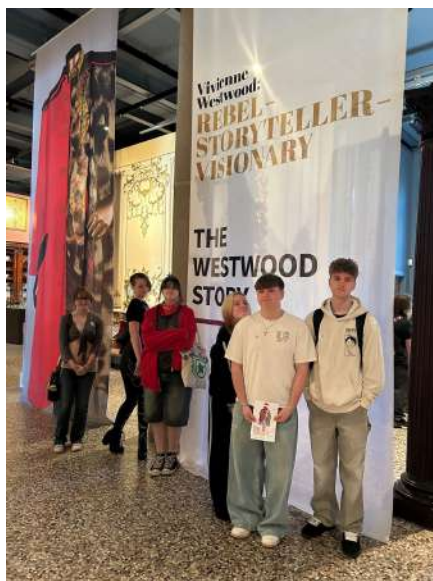
On Friday 1st May and Tuesday 5th May, our KS4 Fashion & Textiles pupils traded the design studio for the grand galleries of The Bowes Museum to visit the headline exhibition, [Vivienne Westwood: Rebel – Storyteller – Visionary](#). Across these two visits, the entire cohort had the opportunity to study the work of one of Britain's most iconic and provocative designers.

Mrs Vizer and Mrs Deighton, who accompanied the groups, were incredibly impressed by the pupils. *"The pupils were outstanding,"* Mrs Vizer noted.



***"Their engagement with the technical elements of the exhibition was fantastic to see, and they represented the school with real maturity and curiosity."***

After the trips, The Bowes Museum also reached out on social media to praise the pupils, stating: ***"It was a pleasure to have you. We're so pleased you enjoyed your visit!"***



### **Bringing the Curriculum to Life**

The visits were a brilliant masterclass in Postmodernism, a movement that is a key focus of the Textiles curriculum. By examining how Westwood playfully deconstructed historical garments—like 18th-century corsetry—and reimagined them with subcultural influences, the pupils saw complex design theories in action. Seeing these concepts "off the page" and in three dimensions will give our pupils a significant advantage, ensuring these ideas are fresh in their minds for their upcoming Textiles exam.

A huge well done to all our KS4 designers for such a successful series of trips. We look forward to seeing that "rebel spirit" reflected in your own upcoming work in the studio!





## Sketchbook Spotlight: Year 7 Step into the Stone Age! 🦴🎨

Looking back at how our Year 7 artists explored the origins of Stone Age art for their very first KS3 art assessments. Under the guidance of Head of Art, Ms Westwood, they ditched the traditional brushes for "primitive" tools like twigs, sticks, and sponges to explore the raw power of prehistoric mark-making.



Ms Westwood was really impressed: ***"I love how the Year 7s threw themselves into this challenge! By stripping away modern tools and working only with things like their fingers, sticks and 'mud' tones, they've managed to capture the raw, gritty feel of real cave art. It's been great to see them handle such a big scale and use tricky materials to tell their own stories, just like the very first artists did."***

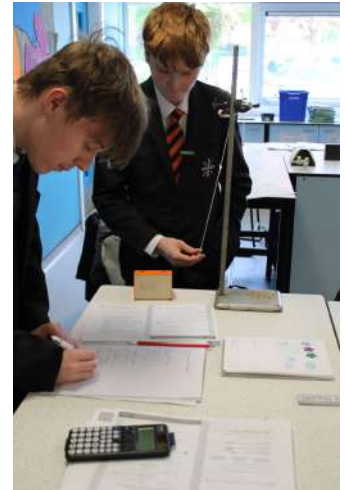
We are so proud of how they embraced the mess and the challenge to bring pre-history to life in their sketchbooks! Well done, Year 7! 🙌 [#RisedaleBESTArtist](#)

## Mastering the Laws of Physics: Year 10 in the Lab

Under the guidance of Dr Shephard, the class carried out a detailed investigation into the physics of pendulums. The core objective was to explore the mathematical relationship between the length of a pendulum and the time period of its swing.

### Precision and Teamwork

Science at this level requires high levels of accuracy; even a small error in measurement can lead to results that deviate from theoretical expectations. However, through meticulous data collection and a collaborative approach, the pupils managed to accumulate a data set that exactly reproduced the theoretical times—a rare and impressive feat in a classroom setting.



Dr Shephard was delighted with the pupils' focus and technical skill, stating:

***"The class were absolutely spot on today, which meant that the measurements exactly matched the expected values. I am very proud of the pupils, who showed great teamwork and gave their BEST!"***

Well done to our Year 10 Triple Science pupils for demonstrating such high levels of academic excellence and collaborative spirit. We look forward to seeing them apply these analytical skills as they continue their GCSE journey!



## Attendance Rewards: Friday Breaktime Butties



A major highlight of break times during Summer Term 1 has been the continuation of our KS3 Friday Breaktime Butty Raffle. The rewards have been rolling out weekly to celebrate those pupils who consistently achieved 100% attendance.

It was great to see so many pupils qualifying for the draw by being through the gates and ready to learn before the bell every single day. Well done to all our winners who enjoyed their Friday treats!

## Risedale School Leads the Way with New Climate Action Plan

Risedale School has officially launched its first comprehensive Climate Action Plan, setting a bold course toward a sustainable future. This strategic roadmap, created in response to Department for Education requirements, commits the school to a significant 50% reduction in carbon emissions by 2030.



The initiative was met with high praise from North Yorkshire Council, with Healthy Schools & Early Years Programme Officer, Ruth Stacey, commending the school for having its roadmap in place.

### A "BEST" Approach to Sustainability

The Climate Action Plan is built upon Risedale's core values: **RESPONSIBILITY**, **RESPECT**, **RESILIENCE**, and **RELATIONSHIPS**. By embedding climate action into daily school life, the school aims to equip pupils to become responsible, respectful, and resilient citizens who can thrive in a changing world.

### The Team Powering the Change:

The project is a collaborative effort led by key staff members and pupil leaders:

- **Operational Leadership:** Facilities Manager Mr Fox is spearheading the "decarbonisation" of the school site. His work includes energy-saving audits, moving toward LED lighting with motion sensors, and upgrading to double-glazed windows.
- **Senior Support:** Headteacher Mrs Greenwood and the school governors are championing these sustainability goals at every level.
- **The Eco Club:** Senior Science Technician Mrs Newall has launched a brand-new Eco Club, creating a space where pupils take the lead on habitat mapping, installing bird and insect boxes, and maintaining outdoor wild areas.
- **Student Council Involvement:** To ensure this is a whole-school effort, Mrs Newall is working alongside the Student Council. These pupil volunteers will act as leaders of change, helping to run climate projects and ensuring the voices of the "Risedale Family" are heard.

### Key Green Initiatives

The Risedale Climate Action Plan focuses on four main pillars to benefit both the school and our local community:

- **Decarbonisation:** Installing LED lighting with motion sensors, transitioning to double-glazed windows, and establishing a carbon baseline using the Count Your Carbon tool.
- **Water and Waste:** Reducing single-use plastics, improving recycling methods, and installing water-saving devices.
- **Biodiversity:** Registering for the National Education Nature Park, undertaking habitat mapping, and installing bird and insect boxes.
- **Climate Education:** Embedding sustainability into the curriculum (specifically Science, Geography, and PSHEe) and hosting "Green Careers" events.
- **Adaptation:** Running "Switch-off" campaigns and utilising outdoor spaces for learning to reduce building energy demand.

## Adaptation and Future Goals

Risedale is also preparing for the impacts of climate change by running "Switch-off" campaigns and utilising outdoor spaces for learning to reduce building energy demand. Looking ahead, the school is exploring staff car-pooling, electric school vehicles, and the installation of on-site electric car charging stations.

Facilities Manager, Mr Fox said: ***"Since joining Risedale earlier this year, I have been impressed by how much our pupils care about their environment and their local community. This Climate Action Plan is our commitment to leading by example. By making these positive changes to our school and our classrooms, we aren't just reducing our carbon footprint—we are embedding our 'BEST' values into a sustainable future for everyone."***

The school has already joined the Let's Go Zero campaign and has received a certificate from North Yorkshire Council to recognise this major step forward. Regular updates on Risedale's progress will be shared via the school website and social media channels.

## Empowering Our Pupils: Mental Health Awareness at Risedale

As we mark Mental Health Awareness Week, we are taking a moment to celebrate the incredible contribution of our Pupil Mental Health Ambassadors, particularly our Year 11s who are currently sitting their GCSE exams.

At Risedale, we believe that mental health support is a shared responsibility, and these pupils have been the heartbeat of that mission.

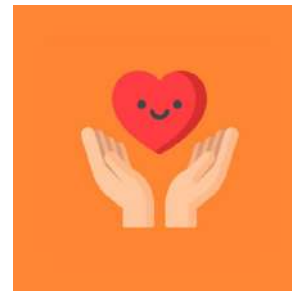
### National Recognition for Risedale School



Our school's [Carnegie School Mental Health Silver Award](#) is a testament to the culture our Ambassadors have helped build. Alongside our staff Wellbeing Champions, School Counsellor, Lisa Smith, our Year 11 Ambassadors have ensured that "Pupil Voice" is at the centre of everything we do.

## A Message to our Year 11 Ambassadors

To our departing Ambassadors: Thank you for your kindness, your dedication, and for always championing the motto **“Who Cares? ... WE DO!”** We wish you the very best of luck with your exams and your future adventures. You will always be part of the Risedale Family.



## Join the Team: Looking to the Future

As our Year 11s prepare to leave, we are excited to welcome new members from all year groups to join our Ambassador team. If you are passionate about wellbeing and want to help support your peers, please get in touch with Lisa.

## Our Positive Mental Health Policy ensures:

- **Early Intervention:** Supporting pupils as early as possible.
- **Safe Environment:** A non-judgmental space for all.
- **Clear Pathways:** Structured support through our Wellbeing team and Lisa Smith.

For a full list of resources, support links, and details on our wellbeing strategy, please visit our dedicated page: [Risedale Health and Wellbeing](#).

## Year 9 Pupils Shine on Bronze DofE Expedition! 🧡🏠

A massive well done to our Year 9 pupils who completed their Bronze Award DofE Expedition and training at [Peat Rigg Outdoor Training Centre](#) on the weekend of 9th–10th May.

Throughout the challenge, our pupils truly embodied our school values. They showed incredible **RESILIENCE** when the trekking got tough, took **RESPONSIBILITY** for their kit, and showed immense



**RESPECT** for the environment and each other. By working together, they strengthened their **RELATIONSHIPS** and proved what it means to be part of the Risedale Family.

The instructors at Peat Rigg were full of praise, noting that our pupils were a credit to the school and made their jobs easy with such a positive attitude.

Mrs Hailwood, DofE Leader, said: ***“They all had very different starting points, but each one of them pushed themselves to their limits... they all learned valuable skills, but also had their own personal wins.”***

We are so proud to see you all becoming the **BEST** versions of yourselves!



## Football Update: Fixtures at Stokesley

On Tuesday, 12th May, our Year 7, 9, and 10 football teams travelled to Stokesley. Although the final scores were not in our favour, it was a proud afternoon for the PE Department as our pupils showcased our core school values of **RESILIENCE** and **RESPECT** against tough opposition.

### Match Highlights:

**Technical Skill:** Year 7 pupil Zakk Brown demonstrated his **BEST** by scoring a clinical goal after executing a perfect "rainbow flick" over a defender.

**Consistency:** Year 10 Ellie-Mae Reid was outstanding as always. As the only female player on the pitch, her performance was a masterclass in skill and **RESILIENCE**, earning the full **RESPECT** of her teammates and opponents alike.

**Goal Scorers:** The Year 10s showed great offensive spirit, with Liam Smith and Matthew Senivota both scoring excellent goals and contributing brilliantly to the team's play.

**Continuous Challenge:** The Year 9 squad pushed their opponents throughout the afternoon, with the Stokesley coaching staff specifically highlighting the impressive performances of Lukas Ellis and Frankie Dempster.

**Leadership:** Despite being sidelined by injury, Corey Hillman took on the **RESPONSIBILITY** of Year 10 Team Manager. His commitment to his teammates is a testament to the strong **RELATIONSHIPS** within the squad.

Reflecting on the day's football matches, Head of PE, Mr Lawson, said:

*"I was incredibly proud of all three squads; the level of effort and sportsmanship across the board was fantastic. Even when the results were going against us, the pupils stayed focused and played with real heart. A huge thank you to Stokesley for hosting us and providing such a high standard of competition. It was a great afternoon for school sport."*

Well done #TeamRisedale 



## Year 8 Residential Adventure at Bewerley Park

From Monday 11th to Wednesday 13th May, Year 8 pupils from Risedale swapped the classroom for the great outdoors at Bewerley Park. Under the expert guidance of the Bewerley Park instructors and accompanied by Mrs Hailwood and Mr Godfrey, the trip was designed to challenge our pupils, foster deep **RELATIONSHIPS**, and provide a platform for personal growth.



The adventure began on Monday afternoon at the iconic Brimham Rocks. Pupils spent the day "scrambling and weaselling", navigating over rocks and squeezing through tight passageways. It was an immediate test of **RESILIENCE**, a value the group embraced wholeheartedly. Mrs Hailwood noted that the pupils treated their **RESILIENCE** "like a muscle that needs working on," and by the end of the day, that muscle was stronger than ever.



Tuesday brought a new challenge: the water. The group embarked on a 6km river trip in canoes, facing surprisingly strong winds. This task required intense **RESPONSIBILITY** and coordination. The pupils had to rely on one another to keep their vessels on track, proving that our "**Family of Learners**" is at its **BEST** when working toward a common goal. The **RESPECT** they showed for the environment and for each other's efforts was truly commendable.

The trip culminated on Wednesday with the daunting "Leap of Faith" on the high ropes course. Watching our pupils stand high above the ground and take that literal jump was a testament to their bravery and grit.

*"I am really proud of all our pupils,"* said Mrs Hailwood. *"Their bravery was absolutely incredible, and they have worked so hard over the last three days. A massive thanks to Mr Godfrey for all his hard work in helping to support this experience."*



At Risedale School, we believe these experiences are vital for developing well-rounded individuals.

We return to school with tired legs but full hearts, ready to apply that same **#TeamRisedale** grit to our studies!



## Supporting our Service Pupils for the Future!

On Thursday, 14th May, we were delighted to welcome back Abbie and Sophie from York St John University! They spent an inspiring morning with our Year 10 pupils as part of the Beyond the Barracks Project.

This initiative is all about empowering our pupils to navigate their post-16 journeys with confidence. The day was packed with high-value takeaways:



**💰 Financial Support & Planning:** A deep dive into the specific support available for service pupils and their families, including bursaries, scholarships, and student finance.

**📄 Exploring Transferable Skills:** In our CV writing workshop, pupils learned how to translate the unique resilience, adaptability, and strengths gained from life as a service child into stand-out professional skills.

**What's next?** As we move toward Armed Forces Day, we are excited to welcome Abbie and Sophie back to Risedale! They'll be leading a special creative session, helping our pupils explore and celebrate the unique benefits of service life.

## Year 9 Pupils Light Up the D&T Workshop 💡



The Design and Technology workshop has been a hive of activity as our Year 9 pupils in Mrs Vizer's class work on their bespoke LED lamps. The project involved a detailed process where pupils used computer software, 2D Design, to draw their own unique patterns, which were then cut out using the laser cutter to produce interlocking MDF panels. To finish their creations, they applied fabric to the interior to beautifully diffuse the light.

This project served as a brilliant showcase of our core values in action. Our pupils took great **RESPONSIBILITY** for the assembly of their lamps and the construction of their own USB circuits. Throughout the manufacturing process, they showed immense **RESPECT** for the materials and specialist equipment provided.

When it came to the technical testing phase, their **RESILIENCE** was key to ensuring each finished product functioned perfectly. Throughout the lessons, the class worked as a true "**Family of Learners**," building positive **RELATIONSHIPS** by supporting one another through the creation and manufacturing stages.

Mrs Vizer has been incredibly proud of the group's dedication, noting: *"The pupils have really given their BEST in these lessons. It is wonderful to see them take their designs from the computer screen and turn them into high-quality, finished products that they can be proud of."*



## Hate Crime Awareness and Safety Assemblies

On Tuesday, 19th May, we were delighted to welcome officers from the Catterick Neighbourhood Policing Team to Risedale School.

The officers delivered assemblies sharing vital information regarding hate crime awareness and the "One Punch Can Kill" campaign. These sessions focused on the importance of taking **RESPONSIBILITY** for our actions and showing **RESPECT** to everyone in our community.

Well done to all our pupils for listening so carefully!

A visiting officer from the team noted: *"It was a privilege to speak with the pupils at Risedale. By raising awareness about hate crimes and the consequences of violence, we hope to empower these young people to make safe, positive choices."*



## Mrs Niblett Completes Barclays Game On Football Qualification



We are delighted to share the news that Pupil Support Manager, Mrs Niblett, has successfully completed the Barclays Game On – GO Teach qualification. This professional programme, delivered in partnership with England Football and the Youth Sport Trust, was supported by Lioness legend Ellen White MBE. The initiative is designed to provide staff with expert skills to lead and grow girls' football within the school community.

At Risedale, we take great pride in staff development that directly benefits our pupils. Mrs Niblett's success ensures a bright future for girls' football at the school, providing a clear pathway for pupils to develop their skills and strive to be the **BEST** version of themselves. To help kickstart this new chapter, the school has also received some

fantastic freebies, including Nike footballs and training bibs!

With a schedule of friendly fixtures already organised for the coming weeks, the school is eager to see even more girls join the squad. By attending Monday football training, 3pm to 4pm in the Sports Hall with Mrs Niblett and Mr Godfrey, pupils can demonstrate the **RESILIENCE** and skills needed to earn a spot on the team and show the **RESPONSIBILITY** required to represent the school.

Mrs Niblett said: *"Passing the course was a brilliant experience, and I am so excited to put everything I've learned into practice. We want to create a culture where every girl at Risedale feels she can turn up and play. We have some fantastic friendlies coming up, and it's great to have some new balls and bibs to use at training!"*

## High-Flying Success for Year 10 GCSE PE Pupils at ROF 59



On Monday, 18th and Tuesday, 19th May, our Year 10 GCSE PE pupils visited [ROF 59 Activity Centre](#) to undertake their practical rock climbing assessments. As a "**Family of Learners**," the group showcased exactly what it means to be part of **#TeamRisedale**, supporting one another through every ascent and technical challenge.

The pupils were assessed on a wide range of disciplines, including bouldering, speed climbing, and traditional rock climbing. Beyond their physical movement on the wall, they had to demonstrate technical proficiency in safety-critical skills such as knot tying, belaying, and safely catching a fall. The group showed immense **RESPONSIBILITY** in managing these tasks, ensuring the safety of their peers while maintaining a high level of focus.

The atmosphere was one of encouragement and **RESILIENCE**. Pupils pushed past their comfort zones to reach the summit, while building positive **RELATIONSHIPS** by coaching and motivating their classmates from the ground. Notable highlights included Alex Stephenson, who clocked a staggering 9.07 seconds on the speed climb—surpassing the instructor's own time—and Lexie Maclean, who set a new record for the girls!

The conduct of the group was exemplary, showing great **RESPECT** to the facility and the staff involved. Their hard work was reflected in their results, with an impressive 50% of the class achieving full marks!!

Mr Lawson, Head of PE, commented:

*"The group was amazing from start to finish. I am extremely proud of how they applied themselves to every challenge; seeing half the class obtain full marks is a testament to their dedication. They truly showed the BEST version of themselves over these two days. I would also like to say a huge thank you to the instructors at ROF 59 Activity Centre for their expertise, and to Dr Ellis and Mrs Clarke for accompanying the trip and supporting our pupils."*



## Year 10 Rewards & Praise for Summer Term 1 Success 🏆



On Thursday, 21st May, our Year 10 pupils were celebrated in a dedicated reward assembly. It was a fantastic opportunity for Mr Kirkbride (Senior Teacher) and Mrs Vizer (BEST Positive Behaviour Lead KS4) to recognise the hard work and commitment shown by the year group throughout the term.

### 🌟 Celebrating Achievement and Attendance

We were delighted to award prizes to the pupils who have accumulated the most **Praise Stamps** this term, representing a consistent effort to go above and beyond in every lesson.

Equally impressive were the pupils who were celebrated for achieving **100% Attendance**. Staying dedicated and present every day is a huge accomplishment, and these pupils are setting a brilliant standard for the rest of the school. We also presented special awards to those who have acted as **Outstanding Role Models**, leading by example and supporting their peers.

### 🏆 BEST Half-Term Awards

The assembly also featured our **BEST Half-Term Awards**. These were presented to pupils who have consistently demonstrated our core school values: **RESPONSIBILITY**, **RESPECT**, **RESILIENCE**, and **RELATIONSHIPS**.

These winners were nominated by staff across the school for truly living our values every day. A huge well-done to all our winners—some of whom received multiple nominations from different staff members!

Well done, Year 10—keep leading by example! #TeamRisedale 💙💜💛❤️

## Pupils Explore Real-World Consequences Through VR Technology



On Thursday, 21st May, Risedale School hosted PC Helen Lavender and Sergeant Heidi Lewis from the North Yorkshire Police School Liaison Team. These sessions coincided with Operation Sceptre—the national knife crime awareness week—to help pupils understand the real-world impact of violent conflict.

During the visit, they worked with groups of pupils who were able to take part in a cutting-edge immersive 3D VR experience. Using 360-degree

virtual reality headsets, the film allowed them to step into the shoes of everyone involved in a violent incident, from the victim and perpetrator to the family members and emergency services personnel. By seeing this "chain of events" firsthand, pupils gained a deeper emotional understanding of how one violent act can destroy multiple lives.

The workshop directly supports our school values, asking pupils to consider their **RESPONSIBILITY** to the community and the importance of positive **RELATIONSHIPS**. By showing **RESPECT** for others and building the **RESILIENCE** to make better choices, we continue to support our pupils in becoming the **BEST** version of themselves.

Sergeant Heidi Lewis, of the School Liaison Team, noted:

*"The film allows young people to step into the shoes of those affected. It shows the ripple effect on the victim, the perpetrator, the family, and the emergency services, helping them realise that one violent act can destroy more than one life."*

These workshops ensure that Risedale pupils are equipped with the knowledge and empathy to remain safe and responsible members of the community.

We'd also like to say a big thank you to the representatives from Restorative Solutions and North Yorkshire Council for visiting Risedale on Wednesday, 20th May. They worked alongside our pupils to explore how we can build stronger **RELATIONSHIPS** and a more connected community together.

We truly value these partnerships in supporting our pupils' growth!



## 5 Stars Again for Risedale's Catering Team ★★★★★



Risedale School is delighted to announce that our catering team has once again secured the highest possible 5-star rating from the Food Hygiene Rating Scheme.

This "Very Good" status is a testament to the rigorous standards maintained behind the scenes. The rating covers everything from food preparation and storage to the cleanliness of the facilities and the effectiveness of safety management systems. You can learn more about how these standards are measured via the [Food Hygiene Rating Scheme website](#).

At the heart of this achievement is a commitment to quality. Head Cook, Mrs Atkins, and her team take great pride in what they serve to the Risedale Family.

***"I'm incredibly proud of the team,"*** said Mrs Atkins. ***"We are dedicated to providing pupils and staff with freshly prepared meals every day. By sourcing our ingredients locally from across the Yorkshire region, we ensure that our menu remains healthy, balanced, and diverse."***

For Headteacher Mrs Greenwood, the team's success isn't just measured by hygiene scores but by the positive atmosphere they create in the canteen.

***"Our catering team is a vital part of the Risedale Family,"*** said Mrs Greenwood. ***"What makes them truly special is the care they show our pupils; they take the time to learn the children's names and build genuine, positive RELATIONSHIPS with them. This 5-star rating is well-deserved, and we are so grateful for their hard work in keeping our pupils well-fueled, happy, and ready to learn."***

The entire school extends its heartfelt congratulations and gratitude to our fantastic catering staff: Mrs Atkins, Mrs Clarke, Mrs Jones and Ms Swales.

Thank you for everything you do for our school!

### **Stitching in Style at Textiles Club!**

Check out these incredible handmade bags fresh off the sewing machines at Textiles Club! Our talented pupils have been busy mastering zips, intricate curves, and strap construction to create these one-of-a-kind accessories.

From bold colour-blocking to elegant floral patterns, the attention to detail is world-class.

Mrs Vizer, Teacher of Design & Technology, was blown away by the craftsmanship on display: ***"I am so impressed by the precision and creativity shown here. These aren't just projects; they are high-quality, functional fashion pieces. Fantastic work, everyone!"***





## Drama Club to Enchant with "Magic and Mischief" Production ✨★

Get ready for an evening of spells, secrets, and spectacular storytelling as the talented pupils of the Risedale School Drama Club prepare to take the stage. This June, the club proudly presents its highly anticipated summer production, "Magic and Mischief."

The spellbinding performance will run for two nights only, on Tuesday, 23rd June and Wednesday, 24th June, from 6:00 PM to 7:30 PM at the school.

Inspired by William Shakespeare's *A Midsummer Night's Dream*, "Magic & Mischief" promises to captivate audiences of all ages, following a chaotic group of characters who accidentally unleash a wave of unpredictable enchantments. To set things right, they must learn to work together, leading to a hilarious and heartwarming adventure that proves the greatest magic of all is friendship.

*"Our pupils have poured their hearts, souls, and a little bit of theatrical wizardry into this production,"* said Ms Dunphy, Drama Club Director. *"From the incredible set designs to the brilliant comedic timing of our cast, 'Magic and Mischief' showcases the creativity thriving here at Risedale. We can't wait to share it with the community."*

Audiences are encouraged to arrive early when doors open to soak up the atmosphere and purchase show programmes before the curtains rise.

### 📅 Ticket and Performance Information:

- **Show Dates:** Tuesday 23rd June & Wednesday 24th June
- **Time:** 6:00 PM – 7:30 PM
- **Location:** Risedale School
- **Tickets:** Available to purchase online now via this link:

<https://www.ticketsource.com/risedale-school/magic-and-mischief/e-grvymr>

A brief intermission will be offered during the performance, where refreshments will be available for purchase at a small cost. We will also be hosting an exciting raffle each night with fantastic prizes up for grabs—all proceeds go directly toward supporting the school's wonderful drama department!

Come out and support the brilliant young arts community at Risedale School. It's bound to be a night of unforgettable fun, laughter, and just a little bit of mischief!

### 🎭 About Risedale School Drama Club:

The Risedale School Drama Club is dedicated to fostering creativity, confidence, and collaboration among pupils through the performing arts. Providing opportunities both on stage and behind the scenes, the club encourages pupils to explore self-expression and develop a lifelong appreciation for the theatre and be the **BEST** versions of themselves.



RISEDALE SCHOOL DRAMA CLUB  
PRESENTS

# Magic & Mischief

*inspired by A Midsummer Night's Dream*  
*by William Shakespeare*

## ★ SHOW NIGHTS ★

★ TUESDAY ★  
**23<sup>rd</sup> June**

WEDNESDAY ★  
**24<sup>th</sup> June**

📍 RISEDALE SCHOOL HALL | 🕒 DOORS OPEN AT 6PM



**RISEDALE**  
A family of learners

**BOOK TICKETS ONLINE**

[ticketsource.com/risedale-school](https://ticketsource.com/risedale-school)

**OR SCAN THE QR CODE**

*All proceeds support the Drama Club*



“ Lord, what fools these mortals be! ”

— Puck, *A Midsummer Night's Dream*



## 🏆 House News: The Race for the Top!

At Risedale, we love celebrating pupils who strive to be their **BEST** in everything they do. Every positive stamp collected doesn't just reward the individual—it brings their House one step closer to the top of the leaderboard!

**The current Positive Stamps awarded to each House are as follows:**

- **1st Turing** ❤️ with **61930 Reward Stamps**
- **2nd Seacole** 🍊 with **60261 Reward Stamps**
- **3rd Pankhurst** 💜 with **58833 Reward Stamps**
- **4th Attenborough** 💙 with **56640 Reward Stamps**

>> For more information, please visit our dedicated [House System](#) website page.

## #TeamRisedale



## 🏆 Attendance Champions: Summer Term 1 Winners!

We had some great tutor group attendance winners for the first half of the Summer Term. Each week, we celebrated the group with the highest combined attendance, recognising their dedication and commitment to their studies. These consistent efforts not only contribute to individual academic success but also foster a positive and productive learning environment for the entire Risedale Family.

### Congratulations to Our Weekly Winners!

We are so proud of the dedication shown by our top tutor groups this half-term. A massive special shout-out goes to the pupils of **7Shergold**, who have been simply unstoppable! They secured the trophy **4 times this half-term**, bringing their incredible total to **15 wins** so far this academic year!

17/04/2026	7Reid	100%
24/04/2026	7Shergold	98.90%
01/05/2026	7Shergold	97.40%
08/05/2026	7Shergold	98.70%
15/05/2026	7Shergold	99.50%
22/05/2026	7Reid	98.30%

★ **Be Here** ★ **Be Ready** ★  
 ★ **Be Your BEST!** ★



# CAR BOOT SALE

**BARGAINS, COMMUNITY & FUN FOR ALL!**



**SATURDAY 27<sup>TH</sup> JUNE** (27/06/26)



**10AM-2PM**

**STALL HOLDERS CAN SET UP FROM 9AM**



**LOCATION:**

Risedale School bottom yard  
(entry through Youth Centre gates)



**PARKING FOR NON STALLHOLDERS:**

School car park



**COST: £10 per pitch**

Register via our online form  
Any remaining pitches on the day will be first-come, first-served — cash only.



**ENTRY: £1 per adult**

Children enter free with parent/carer.



**REFRESHMENTS WILL BE ON SALE THROUGHOUT THE DAY**

Hot dogs • Coffee/Tea • Cold drinks • Ice lollies  
Homemade baked treats



**THIS WILL BE A CASH ONLY EVENT OTHER THAN ONLINE BOOKING.**

**SCAN TO BOOK YOUR PITCH ONLINE!** →





**RISEDALE**

A family of learners